

Report No.:

Test Time: 26.08.2020 21:57

Luminaire Property

Luminaire Manufacturer:

Luminaire Description: FD 112 200W 5000K 60gr. prozrachnoe steclo DALI

Number of Lamps: 1

Luminous Length (mm): 364

Luminous Width (mm): 364

Luminous Height (mm): 138

Voltage: 221.7 V

Current: 0.921 A

Power: 200.87 W

Power Factor: 0.983

Photometric Results

CIE Class: Direct

Total Rated Lamp Lumens: 28968.5 lm

Measurement Flux: 28968.5 lm

Efficiency: 100%

Downward Ratio: 100%

Upward Ratio: 0%

Field Angle(C0/C180,C90/C270,C45/C225,C135/315): 101.2, 104.5, 102.5, 102.3

Beam Angle(C0/C180,C90/C270,C45/C225,C135/315): 63.4, 65.1, 64.4, 64.6

Luminaire Efficacy Rating (LER): 144.27

Central Intensity: 24825.81 cd

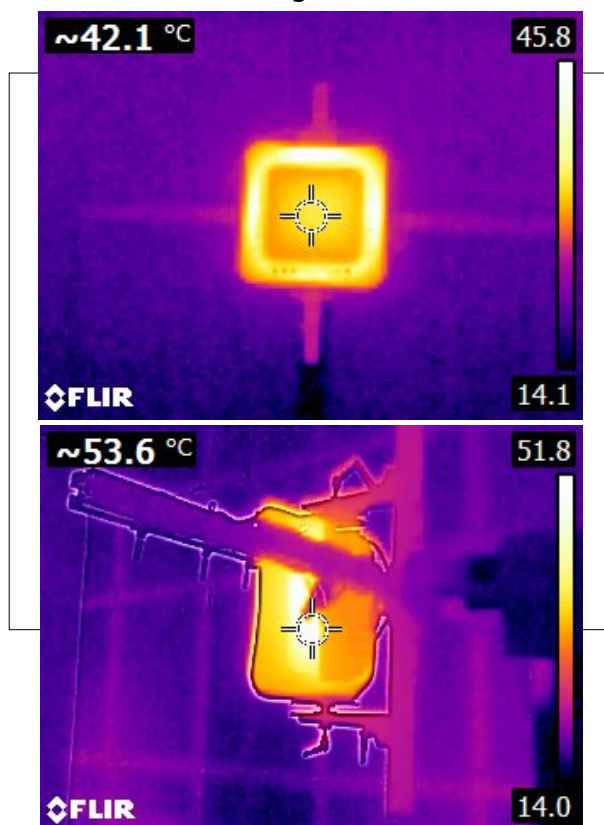
Max. Intensity: 24833.01 cd

Pos of Max. Intensity: H157.5 V0

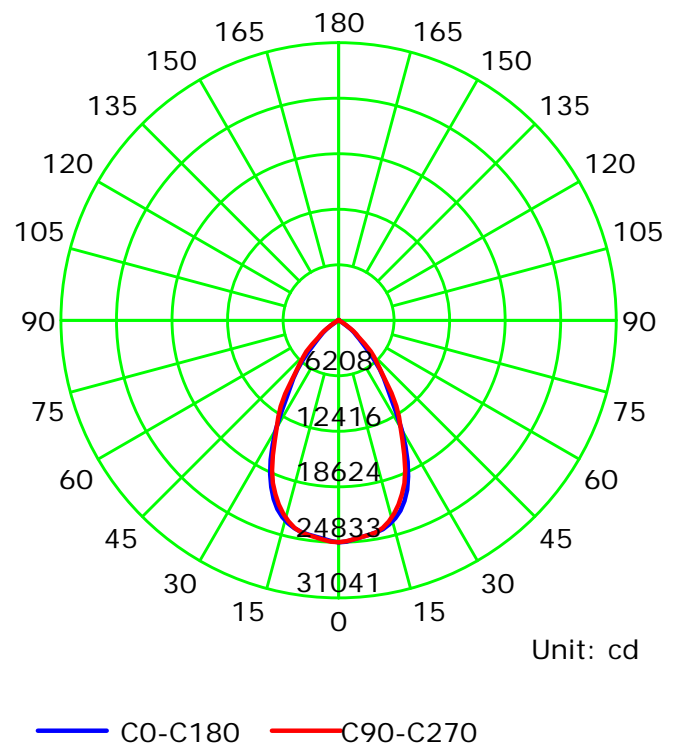
S/MH(C0/C180): 0.99

S/MH(C90/C270): 0.96

Termogramma



Luminous Intensity Distribution Curve



C Plane (°):0.0-360.0: 22.5

Test Lab:

Test Type: TYPE C

Temperature:

Operator:

Gamma Plane (°):0.0-180.0:2.0

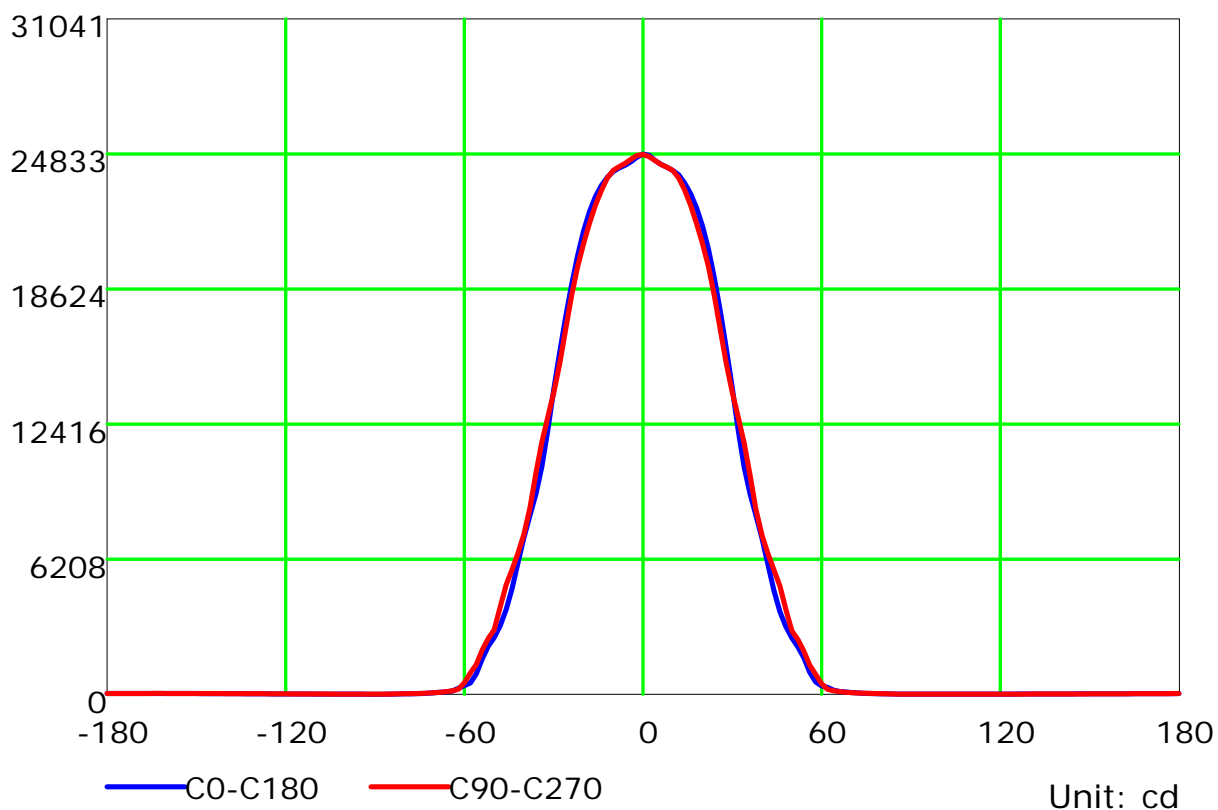
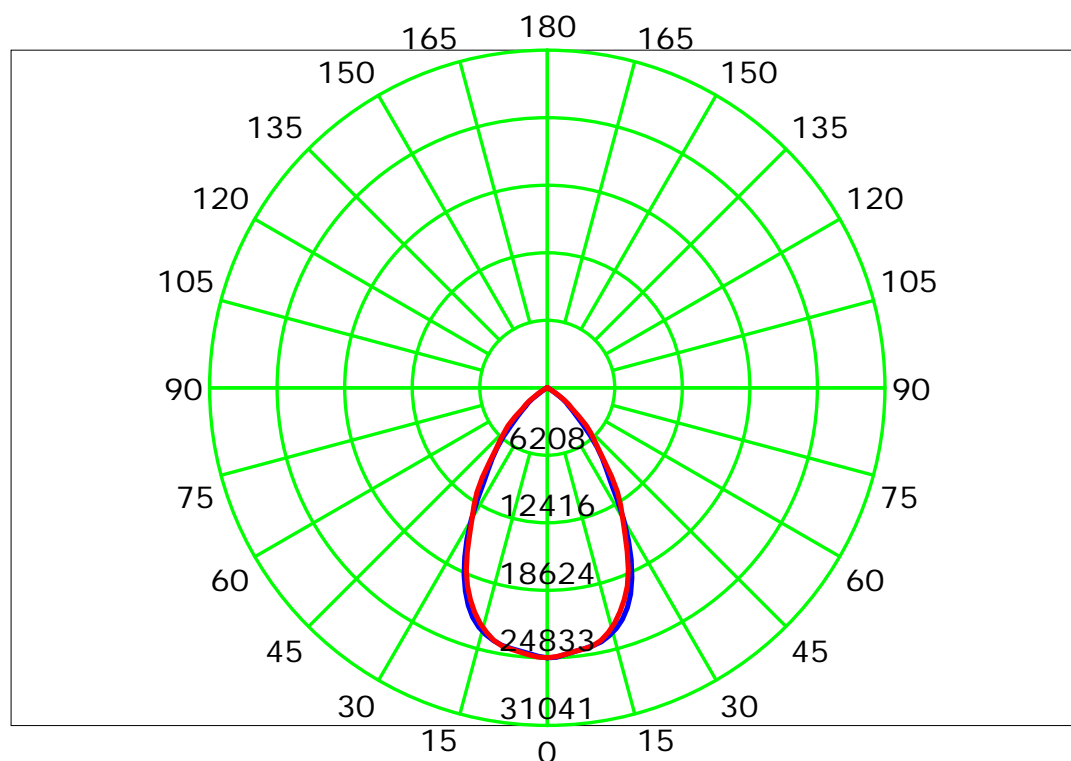
Test Device: LSG-1800B

Distance: 12.677 m

Humidity:

Inspector:

Luminous Intensity Distribution Curve



C Plane (°): 0.0-360.0: 22.5

Test Lab:

Test Type: TYPE C

Temperature:

Operator:

Gamma Plane (°): 0.0-180.0: 2.0

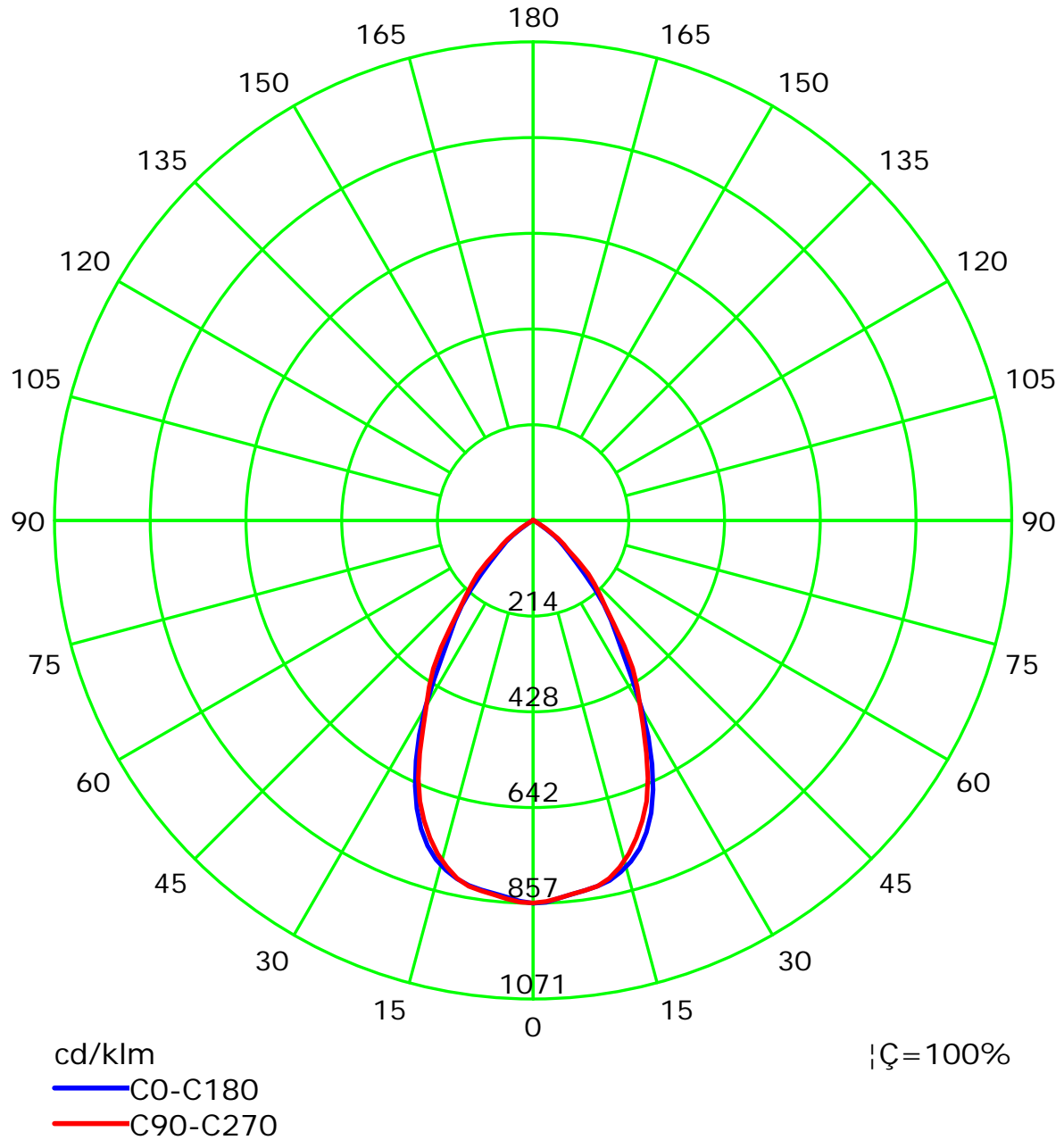
Test Device: LSG-1800B

Distance: 12.677 m

Humidity:

Inspector:

Luminous Intensity Distribution Curve(cd/klm)



C Plane (°):0.0-360.0: 22.5

Test Lab:

Test Type: TYPE C

Temperature:

Operator:

Gamma Plane (°):0.0-180.0:2.0

Test Device: LSG-1800B

Distance: 12.677 m

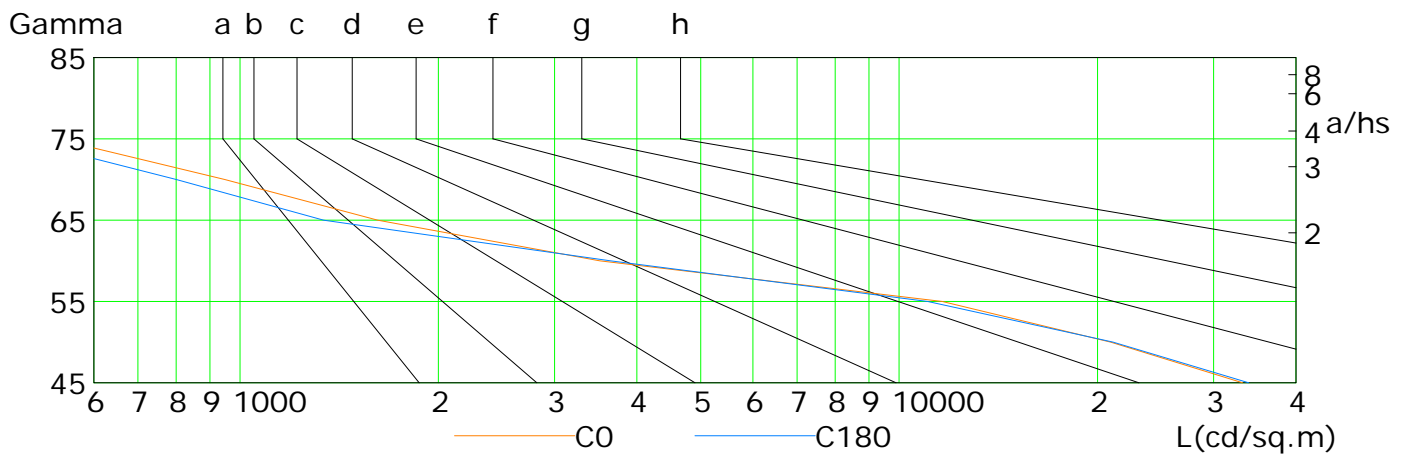
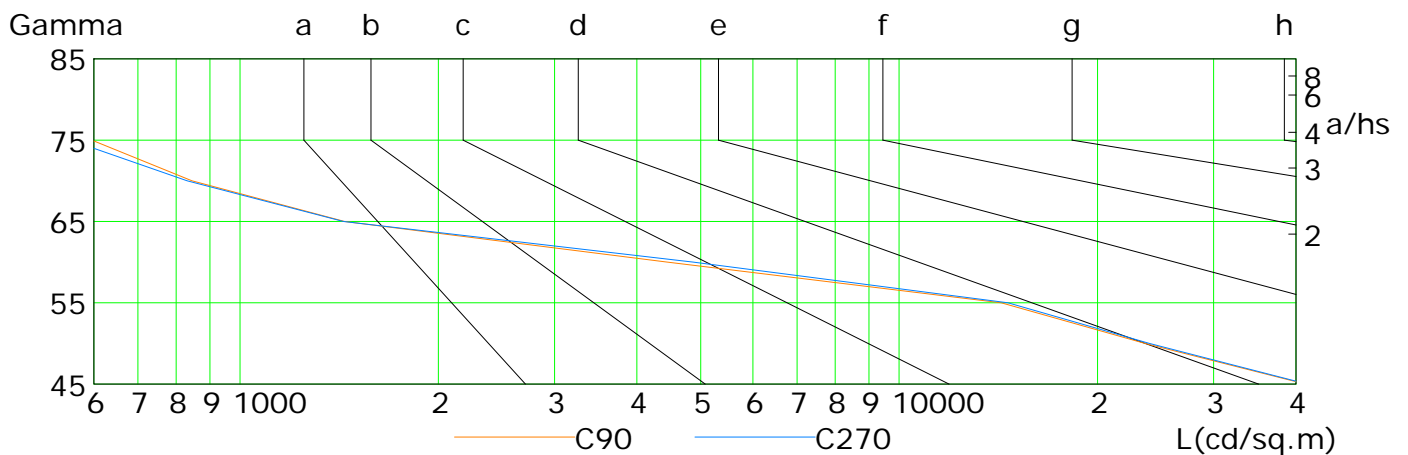
Humidity:

Inspector:

Lum Limit Curve

Dazzle	Quality	Illuminance (lx)							
1.15	A	2000	1000	500	<=300				
1.50	B		2000	1000	500	<=300			
1.85	C			2000	1000	500	<=300		
2.20	D				2000	1000	500	<=300	
2.55	E					2000	1000	500	<=300

a b c d e f g h



L(cd/sq.m)	G45	G50	G55	G60	G65	G70	G75	G80	G85
C0	33193	20943	11625	3514	1618	948	527	366	272
C90	41414	23611	14281	4450	1441	846	596	456	283
C180	33907	21112	11050	3648	1339	800	459	310	193
C270	41671	23979	14625	4873	1435	832	553	416	269

C Plane (°):0.0-360.0: 22.5

Test Lab:

Test Type: TYPE C

Temperature:

Operator:

Gamma Plane (°):0.0-180.0:2.0

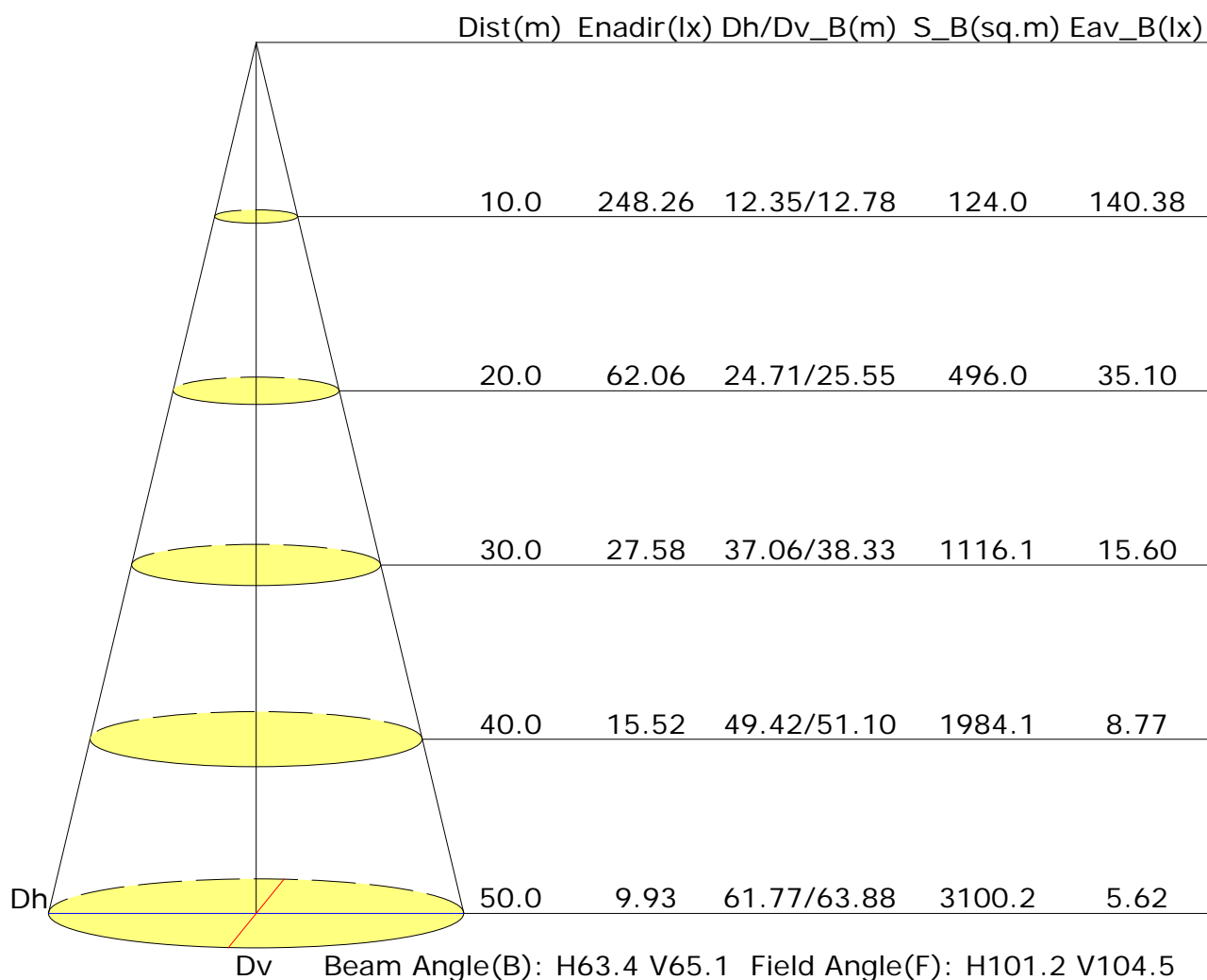
Test Device: LSG-1800B

Distance: 12.677 m

Humidity:

Inspector:

Illuminance at a Distance



UGR Table

Reflectance:										
Ceiling (cavity)	0.7	0.7	0.5	0.5	0.3	0.7	0.7	0.5	0.5	0.3
Wall	0.5	0.3	0.5	0.3	0.3	0.5	0.3	0.5	0.3	0.3
Reference plane	0.2	0.2	0.2	0.2	0.2	0.2	0.2	0.2	0.2	0.2
Room dimensions	Viewed crosswise					Viewed endwise				
X=2H Y=2H	20.6	21.5	20.8	21.8	22.0	20.9	21.9	21.2	22.1	22.3
3H	20.4	21.3	20.7	21.5	21.8	20.8	21.6	21.1	21.9	22.2
4H	20.3	21.2	20.7	21.4	21.7	20.7	21.5	21.0	21.8	22.1
6H	20.3	21.0	20.6	21.3	21.6	20.6	21.4	21.0	21.7	22.0
8H	20.2	21.0	20.6	21.3	21.6	20.6	21.3	20.9	21.6	21.9
12H	20.2	20.9	20.6	21.2	21.5	20.5	21.2	20.9	21.6	21.9
X=4H Y=2H	20.4	21.2	20.7	21.5	21.8	20.7	21.6	21.1	21.8	22.1
3H	20.3	21.0	20.6	21.3	21.6	20.6	21.3	21.0	21.6	21.9
4H	20.2	20.8	20.6	21.1	21.5	20.5	21.1	20.9	21.5	21.8
6H	20.1	20.6	20.5	21.0	21.4	20.4	21.0	20.9	21.4	21.8
8H	20.1	20.6	20.5	21.0	21.4	20.4	20.9	20.8	21.3	21.7
12H	20.0	20.5	20.5	20.9	21.3	20.4	20.8	20.8	21.2	21.7
X=8H Y=4H	20.1	20.6	20.5	21.0	21.4	20.4	20.9	20.8	21.3	21.7
6H	20.0	20.4	20.5	20.8	21.3	20.3	20.7	20.8	21.1	21.6
8H	19.9	20.3	20.4	20.7	21.2	20.3	20.6	20.8	21.1	21.6
12H	19.9	20.2	20.4	20.7	21.2	20.2	20.5	20.7	21.0	21.5
X=12H Y=4H	20.0	20.5	20.5	20.9	21.3	20.4	20.8	20.8	21.2	21.7
6H	19.9	20.3	20.4	20.7	21.2	20.3	20.6	20.8	21.1	21.6
8H	19.9	20.2	20.4	20.7	21.2	20.2	20.5	20.7	21.0	21.5
Variations with the observer position at spacings:										
S=1.0H	+2.4/-5.6					+2.1/-4.5				
S=1.5H	+4.8/-13.3					+4.5/-13.5				
S=2.0H	+6.8/-15.7					+6.5/-16.5				

Calculate in accordance with CIE Pub.117. The table is revised with 28969lm ($8\log(F/F_0) = 11.7$).

C Plane (°):0.0-360.0: 22.5

Test Lab:

Test Type: TYPE C

Temperature:

Operator:

Gamma Plane (°):0.0-180.0:2.0

Test Device: LSG-1800B

Distance: 12.677 m

Humidity:

Inspector:

Utilisation Factor Table(Floor cavity)

Utilisation Factors UF(F)			SHR NOM = 1.00									
Room Reflectance			Room Index(RI)									
Ceiling	Wall	Floor	0.75	1.00	1.25	1.50	2.00	2.50	3.00	4.00	5.00	
0.70	0.50	0.20	0.79	0.87	0.92	0.96	1.01	1.04	1.06	1.08	1.10	
	0.30		0.74	0.82	0.88	0.92	0.97	1.00	1.03	1.06	1.08	
	0.20		0.70	0.79	0.84	0.88	0.94	0.97	1.00	1.04	1.06	
0.50	0.50	0.20	0.78	0.85	0.90	0.93	0.98	1.00	1.02	1.04	1.06	
	0.30		0.73	0.81	0.86	0.90	0.95	0.98	1.00	1.02	1.04	
	0.20		0.70	0.78	0.83	0.87	0.92	0.95	0.97	1.01	1.03	
0.30	0.50	0.20	0.77	0.84	0.88	0.91	0.95	0.97	0.99	1.01	1.02	
	0.30		0.72	0.80	0.85	0.88	0.92	0.95	0.97	0.99	1.01	
	0.20		0.69	0.77	0.82	0.86	0.90	0.93	0.95	0.98	0.99	
0.00	0.00	0.00	0.68	0.75	0.80	0.83	0.87	0.90	0.91	0.93	0.95	
<p>Rating: 201W Photometrically tested without ceiling board.</p> <p>Multiply UF values by service correction factors</p> <p>Calculate in accordance with CIBSE Technical Memorandum NO.5 1980</p>												

Utilisation Factor Table(Wall)

Utilisation Factors UF(W)			SHR NOM = 1.00									
Room Reflectance			Room Index(RI)									
Ceiling	Wall	Floor	0.75	1.00	1.25	1.50	2.00	2.50	3.00	4.00	5.00	
0.70	0.50	0.20	0.66	0.52	0.43	0.37	0.29	0.24	0.20	0.16	0.13	
	0.30		0.55	0.45	0.38	0.33	0.26	0.22	0.19	0.15	0.12	
	0.20		0.47	0.39	0.34	0.30	0.24	0.20	0.18	0.14	0.11	
0.50	0.50	0.20	0.63	0.49	0.41	0.35	0.27	0.26	0.19	0.14	0.12	
	0.30		0.53	0.43	0.36	0.31	0.25	0.21	0.18	0.14	0.11	
	0.20		0.46	0.38	0.32	0.28	0.23	0.19	0.17	0.13	0.11	
0.30	0.50	0.20	0.61	0.47	0.39	0.33	0.25	0.21	0.17	0.13	0.11	
	0.30		0.52	0.41	0.35	0.30	0.23	0.19	0.16	0.13	0.10	
	0.20		0.45	0.37	0.31	0.27	0.22	0.18	0.15	0.12	0.10	
0.00	0.00	0.00	0.33	0.25	0.20	0.17	0.13	0.11	0.09	0.07	0.05	
<p>Rating: 201W Photometrically tested without ceiling board.</p> <p>Multiply UF values by service correction factors</p> <p>Calculate in accordance with CIBSE Technical Memorandum NO.5 1980</p>												

Utilisation Factor Table(Ceiling cavity)

Utilisation Factors UF(C)			SHR NOM = 1.00								
Room Reflectance			Room Index(RI)								
Ceiling	Wall	Floor	0.75	1.00	1.25	1.50	2.00	2.50	3.00	4.00	5.00
0.70	0.50	0.20	0.14	0.15	0.16	0.17	0.19	0.19	0.20	0.21	0.21
	0.30		0.09	0.11	0.13	0.14	0.16	0.17	0.18	0.19	0.20
	0.20		0.06	0.08	0.10	0.11	0.13	0.15	0.16	0.17	0.18
0.50	0.50	0.20	0.13	0.15	0.16	0.17	0.18	0.19	0.19	0.20	0.20
	0.30		0.09	0.11	0.12	0.13	0.15	0.16	0.17	0.18	0.19
	0.20		0.06	0.08	0.10	0.11	0.13	0.14	0.15	0.17	0.18
0.30	0.50	0.20	0.13	0.14	0.15	0.16	0.17	0.18	0.18	0.19	0.20
	0.30		0.09	0.11	0.12	0.13	0.15	0.16	0.17	0.18	0.18
	0.20		0.06	0.08	0.09	0.11	0.13	0.14	0.15	0.16	0.17
0.00	0.00	0.00	0.00	0.00	0.00	0.00	0.00	0.00	0.00	0.00	0.00
Rating: 201W Photometrically tested without ceiling board. Multiply UF values by service correction factors Calculate in accordance with CIBSE Technical Memorandum NO.5 1980											